

## Specialist Press Release

August 30, 2022

Contact:  
Martina Krammer  
BAUER Aktiengesellschaft  
BAUER-Strasse 1  
86529 Schrobenhausen, Germany  
Phone +49 8252 97-3616  
[public.relations@bauer.de](mailto:public.relations@bauer.de)  
[www.bauer.de](http://www.bauer.de)

### **Return to Frankfurt: BAUER Spezialtiefbau GmbH once again commissioned with the execution of an excavation pit in the Mainmetropolis**

**Frankfurt am Main, Germany** – As a long-established trade fair location, international financial center and home to the European Central Bank, Frankfurt am Main is one of the most important cities in the world and is constantly evolving. In this context, BAUER Spezialtiefbau GmbH was previously commissioned in 2020 with the construction of an overall excavation pit for the new building of exhibition hall 5 in Frankfurt. Now the specialist foundation engineering experts are returning to the Mainmetropolis for another project in the immediate vicinity of Messe Frankfurt exhibition grounds.

“For a new hotel and office high-rise as well as for the South entrance of the exhibition grounds, we were entrusted with the construction of the corresponding excavation pit,” explains Jonas Höltje, Site Manager of BAUER Spezialtiefbau GmbH. The scope of services commissioned by GZS GG Frankfurt Europaallee GmbH includes the construction of foundation piles and a two-phase diaphragm wall that form the basis for the construction of a 123 m tall high-rise with a four-story underground garage. In addition, five anchor layers are being constructed as tie backs in the western part of the excavation pit, while strutting is executed in the eastern part using two strut layers guided across corners. “The pile and diaphragm wall work has already been concluded,” continues Jonas Höltje. The 45 foundation piles in total were executed as fully cased piles with a diameter of 1,500 mm and up to 17 m of empty bores and the 240 m two-phase diaphragm walls were constructed with a width of 0.8 m up to a depth of 33 m. Currently, the soil excavation and the construction of the first and second anchor layers are underway.

One challenge during this project was posed by the logistics: Because the construction area was limited by the exhibition grounds and a track section, no usable storage areas were available. Both the supply of materials and the disposal logistics for the drill spoil therefore required extensive planning. A drilling rig BAUER BG 39, an duty-cycle crane MC 64 with grab unit and two KLEMM KR 806 anchor drilling rigs are being used for this work. The work started in January and is expected to be completed by November 2022.

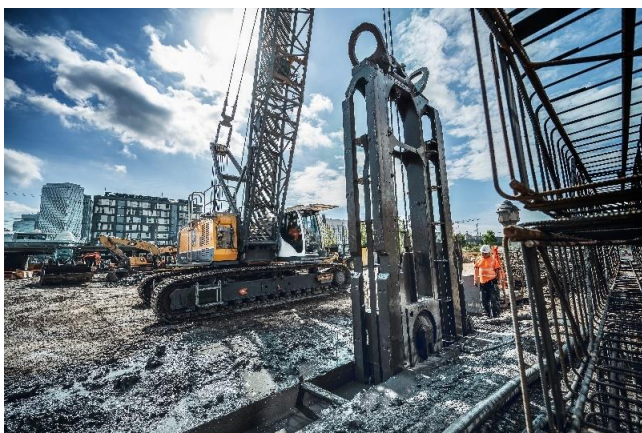
Photos: 2022-08\_BAUER\_Frankfurt+trade+fair+south+entrance...



(1) For a new office and hotel high-rise at the South entrance of the exhibition grounds, Bauer Spezialtiefbau is constructing a four-story underground garage and a two-phase diaphragm wall.



(2) Site manager Severine Ax with site manager Jonas Höltje



(3) Among other equipment, an MC 64 duty-cycle crane with grab unit is being used for this work.

All photos: © BAUER Group

### **About BAUER Spezialtiefbau Group**

BAUER Spezialtiefbau GmbH, the original parent company of the BAUER Group, has been a major driving force in the development of specialist foundation engineering. It carries out all of the customary processes of foundation engineering, primarily for excavation pits, foundations, cut-off walls and ground improvements on a worldwide basis. In doing so, BAUER Spezialtiefbau GmbH works closely together with their over 50 subsidiaries and branches across the globe. Regional networks around the world allow for the quick and flexible application of machines, teams and expertise. Bauer Spezialtiefbau offers their customers individual, creative and economical specialist foundation engineering solutions for demanding construction projects, from planning through to execution. More at [bst.bauer.de](http://bst.bauer.de)

### **About Bauer**

The BAUER Group is a leading provider of services, equipment and products dealing with ground and groundwater. With over 110 subsidiaries, Bauer can rely on a worldwide network on all continents. The Group's operations are divided into three forward-looking segments with high synergy potential: Construction, Equipment and Resources. Bauer profits enormously from the collaboration of its three business segments, enabling the Group to position itself as an innovative, highly specialized provider of products and services for demanding projects in specialist foundation engineering and related markets. Bauer therefore offers suitable solutions to the world's greatest challenges, such as urbanization, the growing infrastructure needs, the environment, as well as water, oil and gas. The BAUER Group was founded in 1790 and is based in Schrobenhausen, Bavaria. In 2021, it employed about 12,000 people in around 70 countries and achieved total Group revenues of EUR 1.5 billion. BAUER Aktiengesellschaft is listed in the Prime Standard of the German Stock Exchange. More information can be found at [www.bauer.de](http://www.bauer.de). Follow us on [Facebook](#), [LinkedIn](#) and [YouTube](#)!